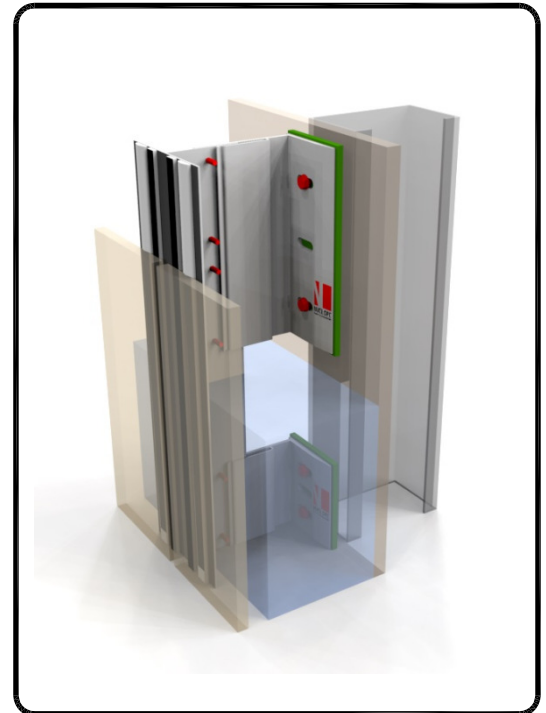


aluminium support system for  
rainscreen cladding

## NVELOPE NV2 SYSTEM STRUCTURAL BONDING ( FEATURING SIKA TACK PANEL SYSTEM )

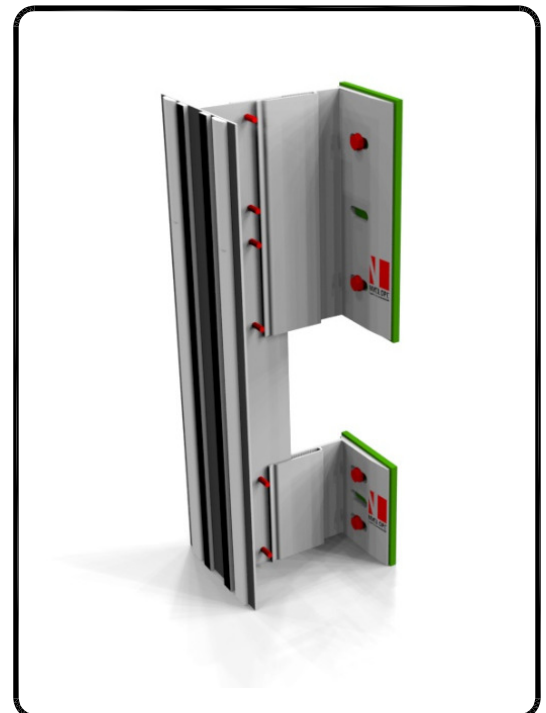


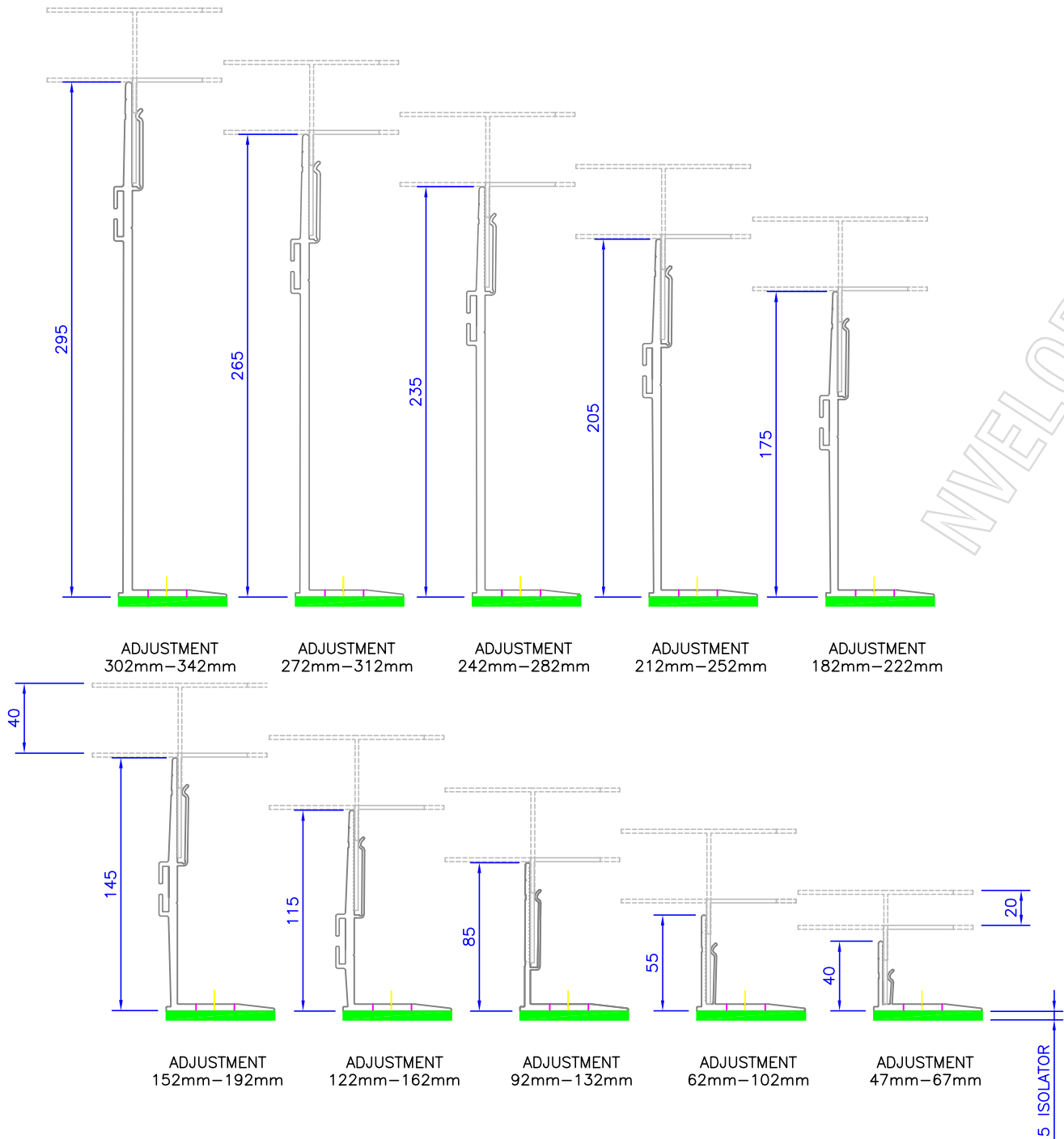
### LEGEND:

- A - Cladding
- B - Sika Tape
- C - Sika Adhesive
- 1 - SFS steel wall + cement board
- 2 - NVELOPE - support bracket
- 3 - Stainless steel fixing
- 4 - T-(L) profile vertical
- 5 - Self drilling stainless steel screw SR2 4.2 x 16
- 7 - Thermal insulation
- 8 - Ventilation
- 10 - NVELOPE thermal isolator
- 11 - Corner Bracket
- 12 - Corner Rail

### CONTENTS:

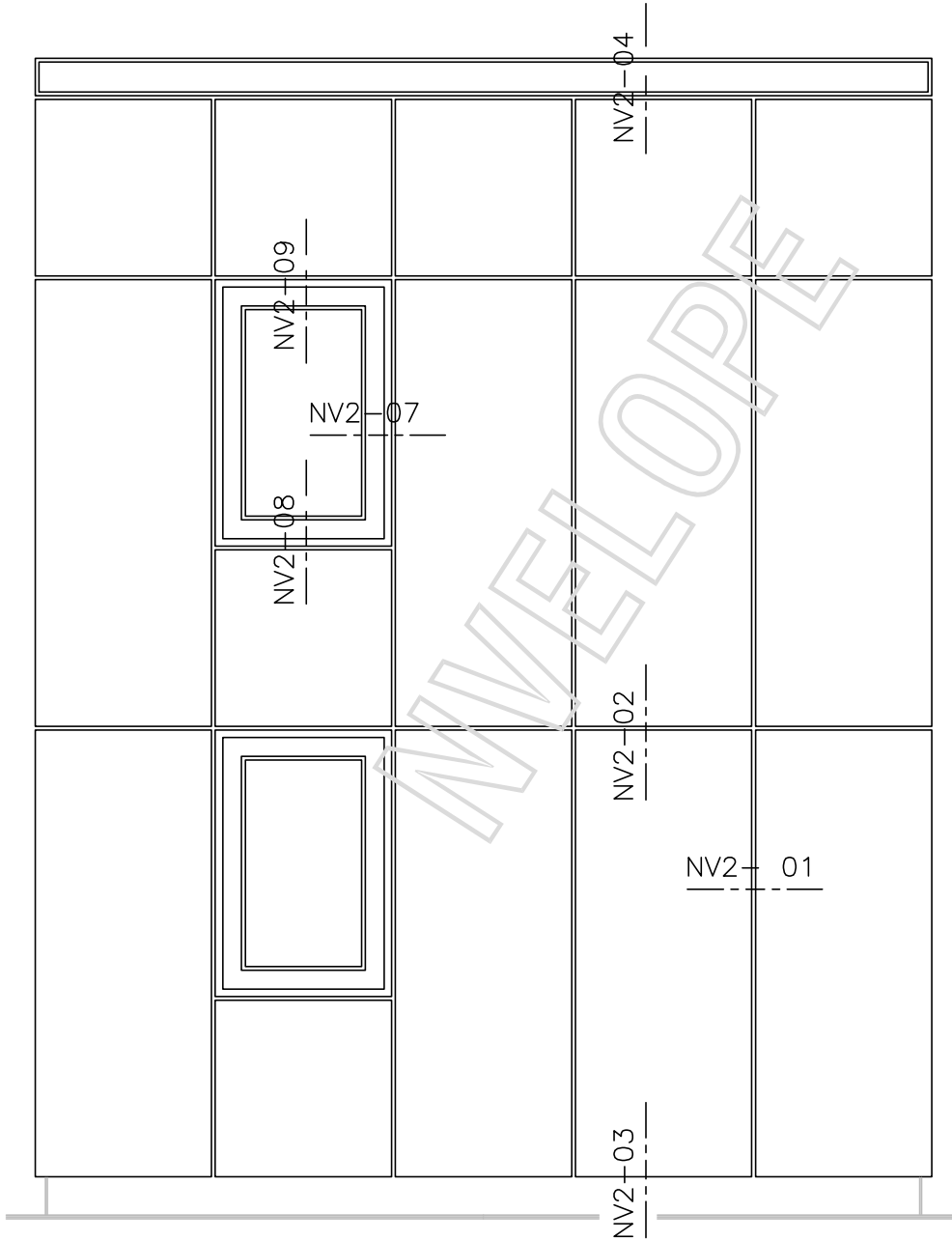
- NV2-00 System detail sheet
- NV2-01 Tolerances for bracket adjustment
- NV2-02 Cladding view locations
- NV2-03 Horizontal section
- NV2-04a Typical section double bracket
- NV2-04b Typical section single bracket and profile connection
- NV2-05 Vertical section-base of cladding
- NV2-06 Vertical section-top of cladding
- NV2-07 Horizontal section window jamb
- NV2-08 Vertical section window sill
- NV2-09 Vertical section window head
- NV2-10a External corner
- NV2-10b External corner with corner bracket
- NV2-11 Internal corner
- NV2-12 SIKA Adhesive use



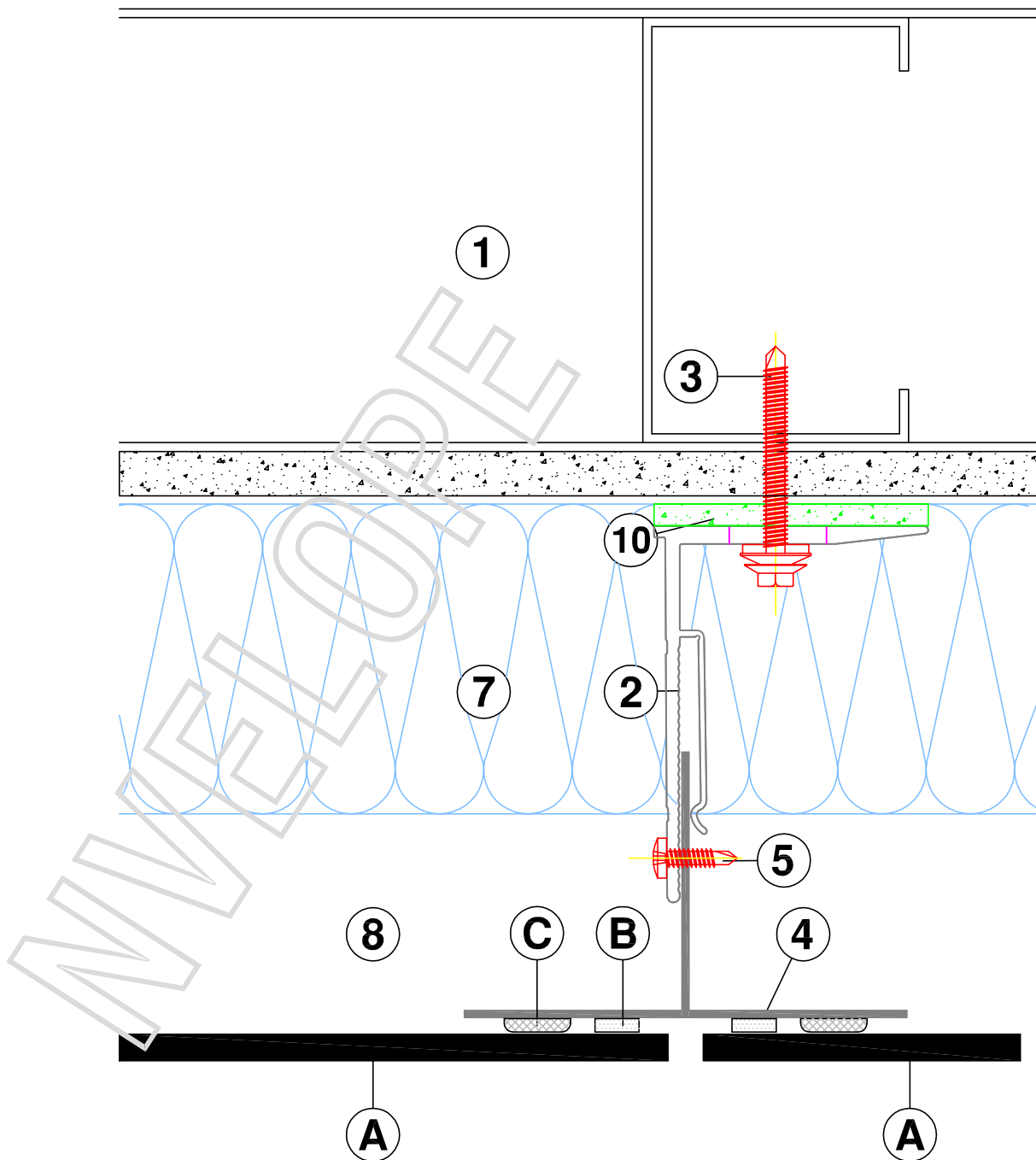


BRACKETS	Adjustment range for each bracket ( mm )	
	from	to
Nvelope 40	47	67
Nvelope 60	62	102
Nvelope 90	92	132
Nvelope 120	122	162
Nvelope 150	152	192
Nvelope 180	182	222
Nvelope 210	212	252
Nvelope 240	242	282
Nvelope 270	272	312
Nvelope 300	302	342

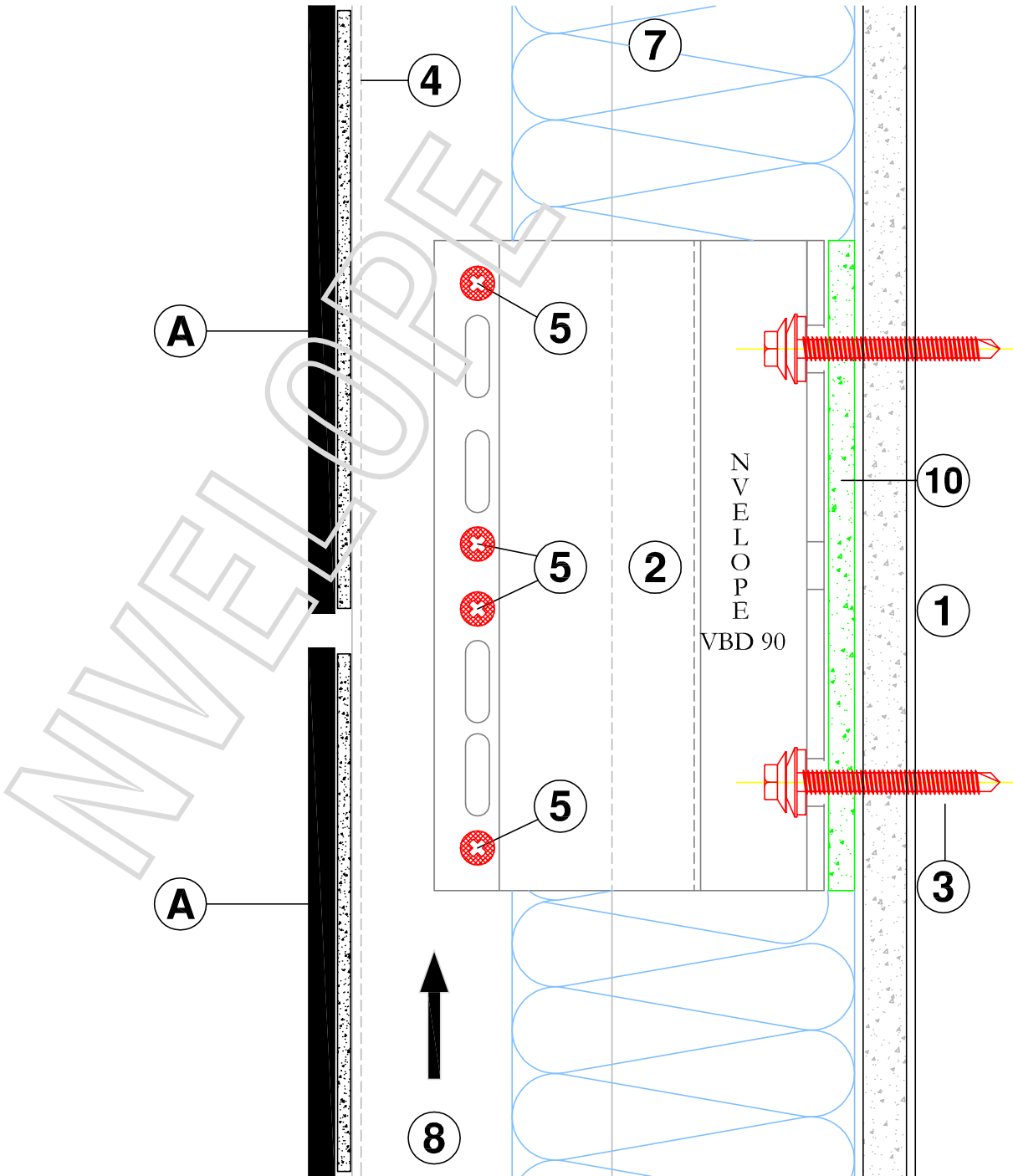
HORIZONTAL SECTIONS  
TOLERANCES FOR ADJUSTMENT



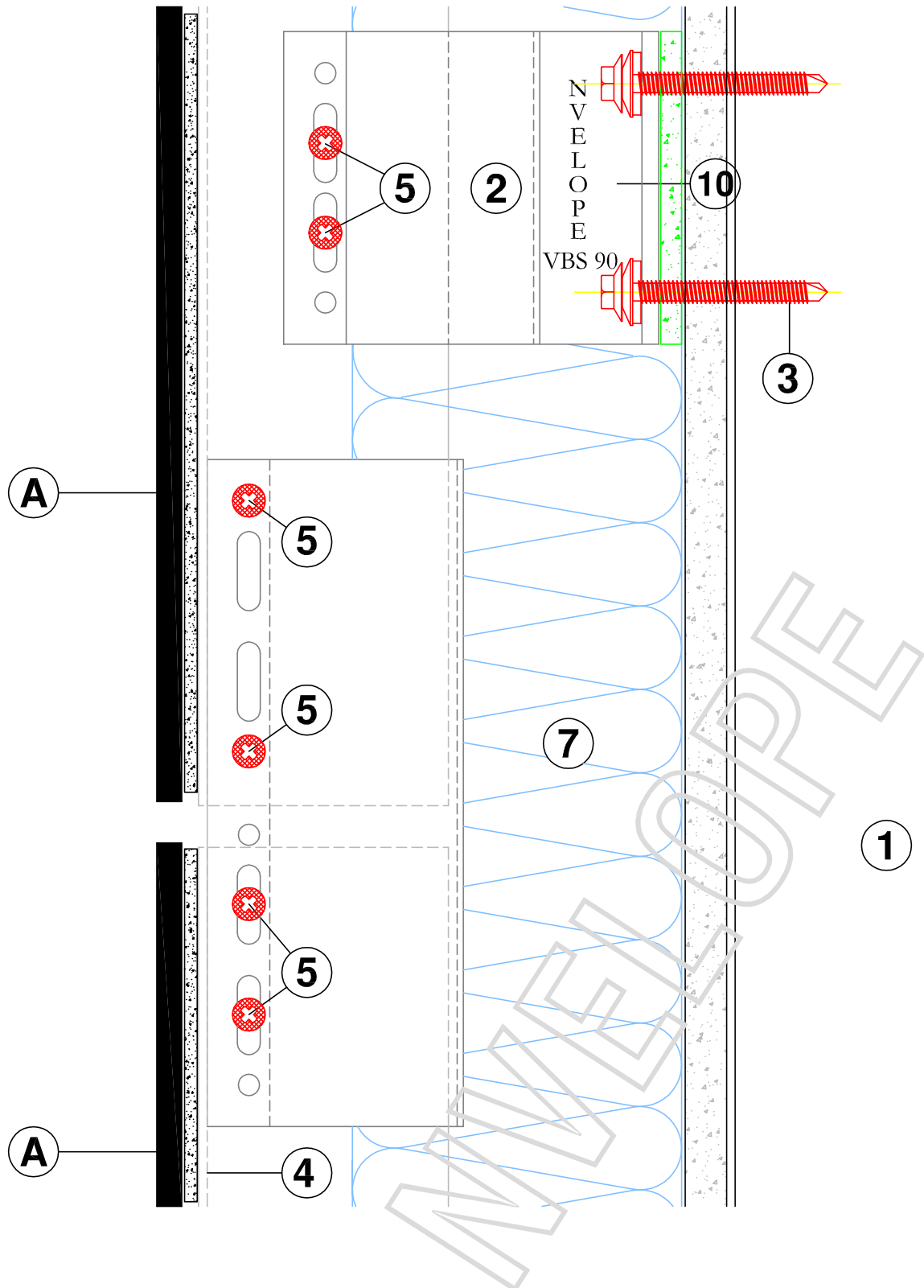
VIEW OF CLADDING - DETAIL LOCATIONS



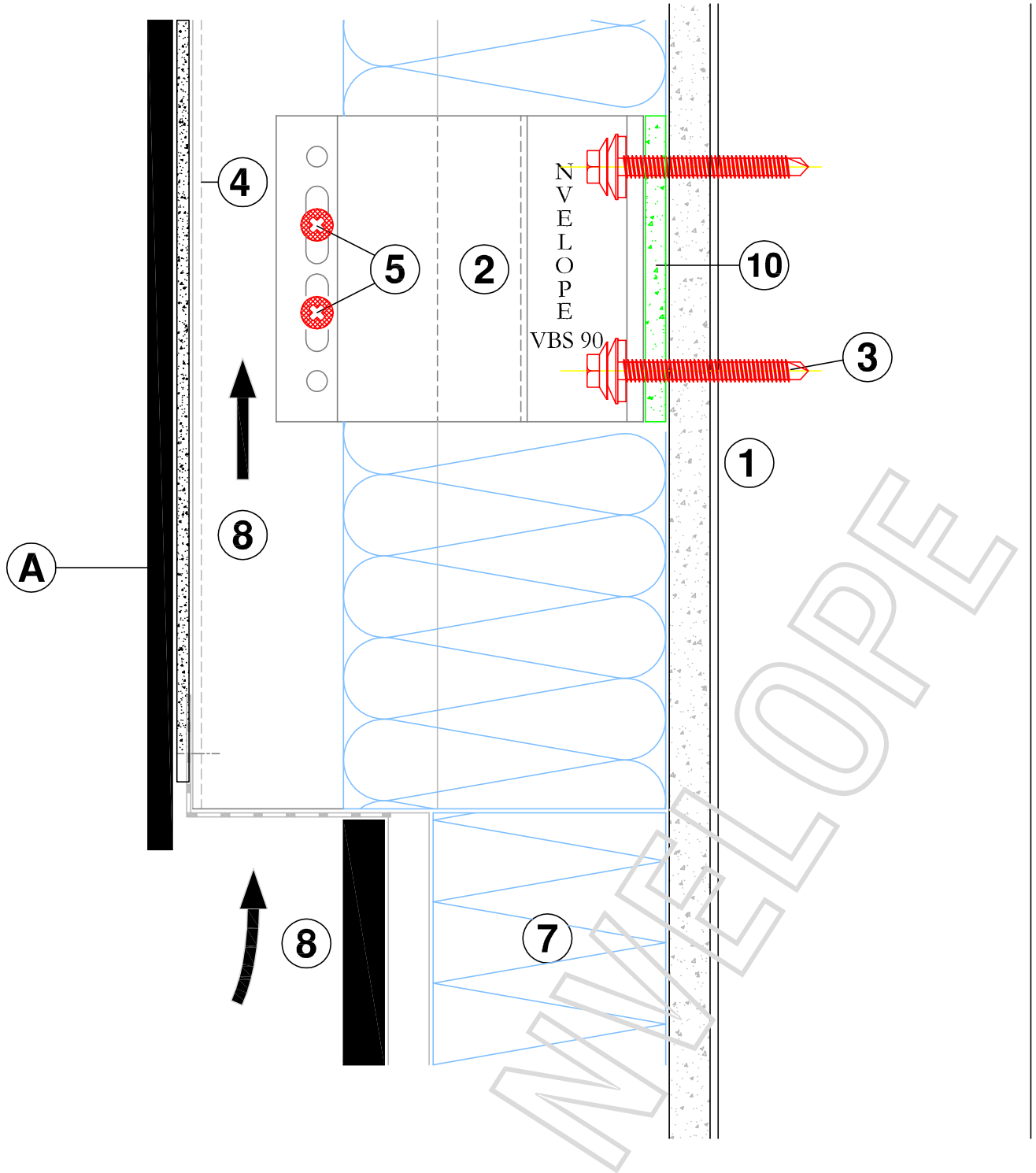
HORIZONTAL SECTION - NVELOPE 90



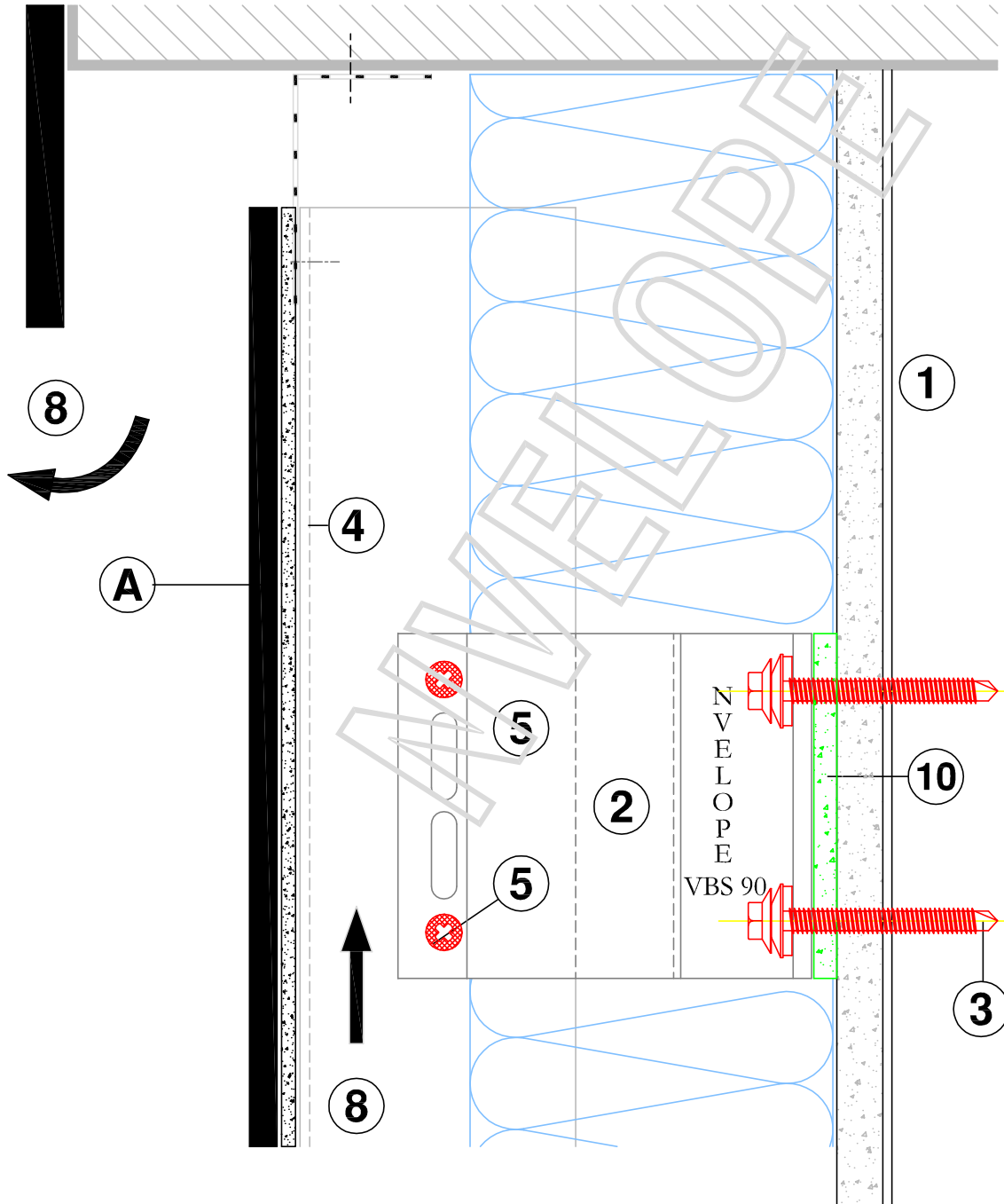
VERTICAL SECTION - NVELOPE VBD 90 FIXED POINT



VERTICAL SECTION - RAIL JOINT OF PROFILE

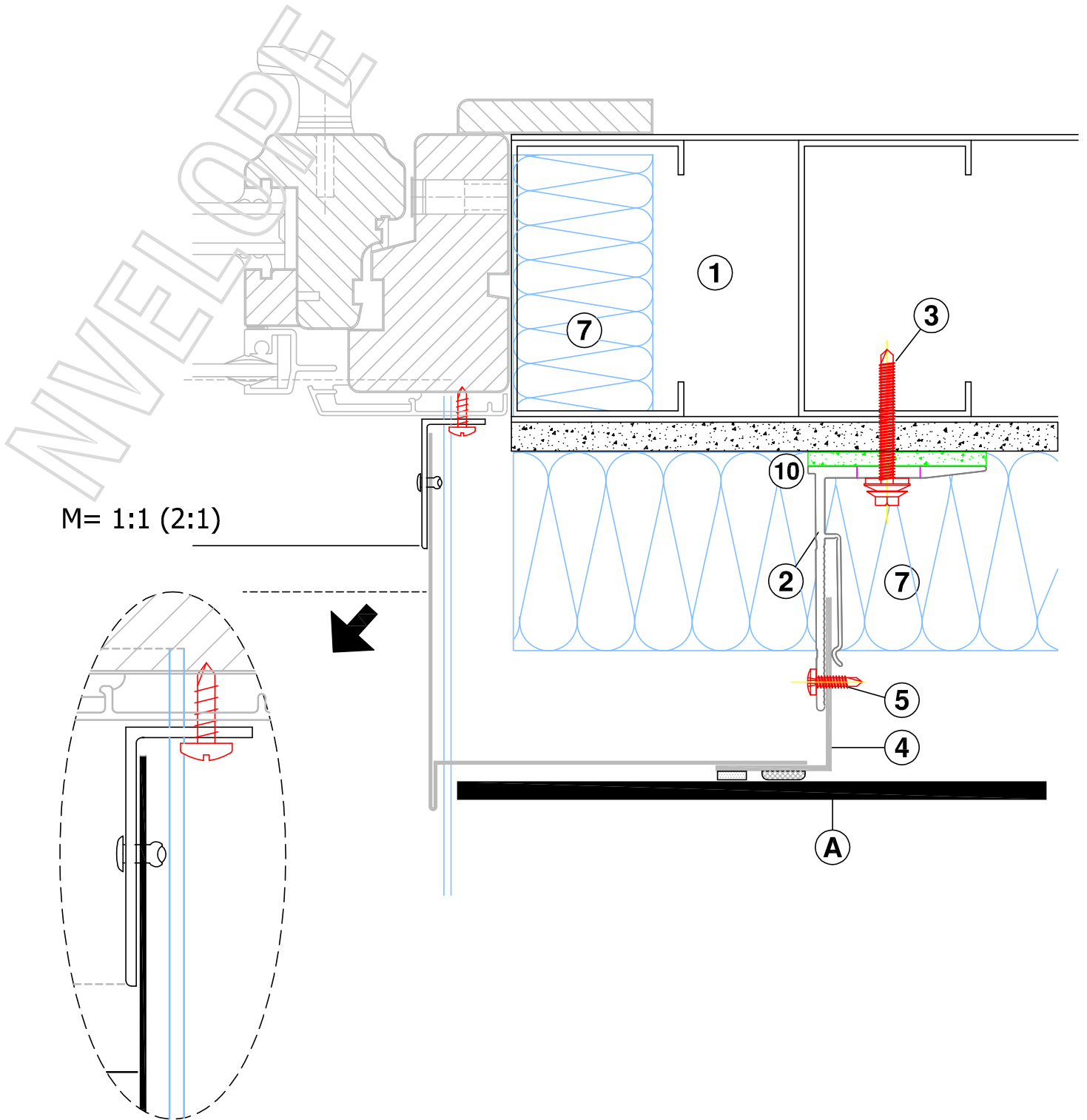


VERTICAL SECTION - BASE OF CLADDING

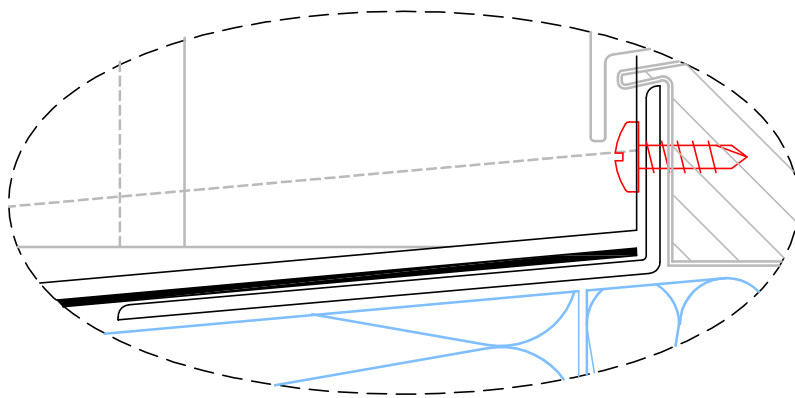


VERTICAL SECTION - TOP OF CLADDING

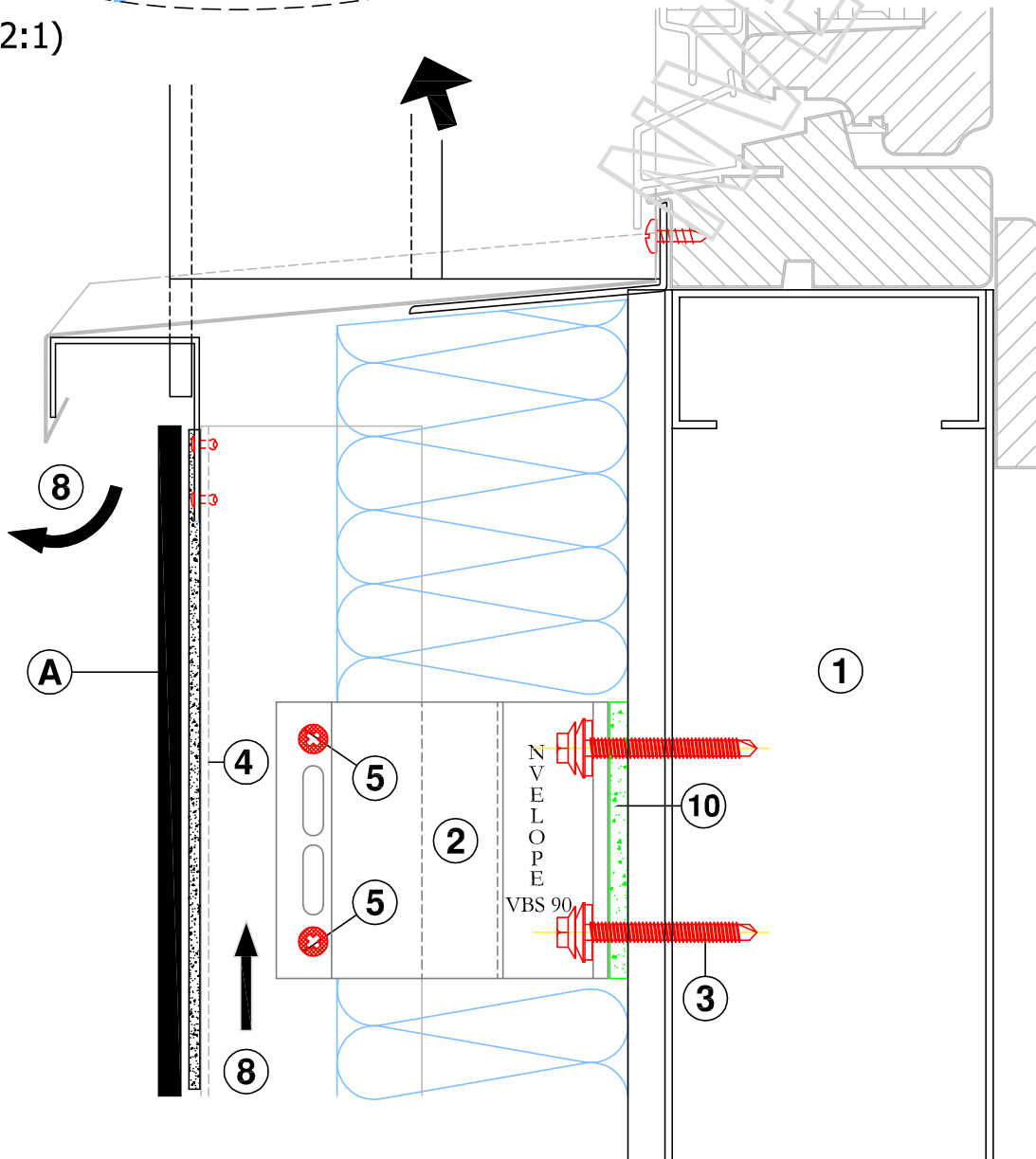




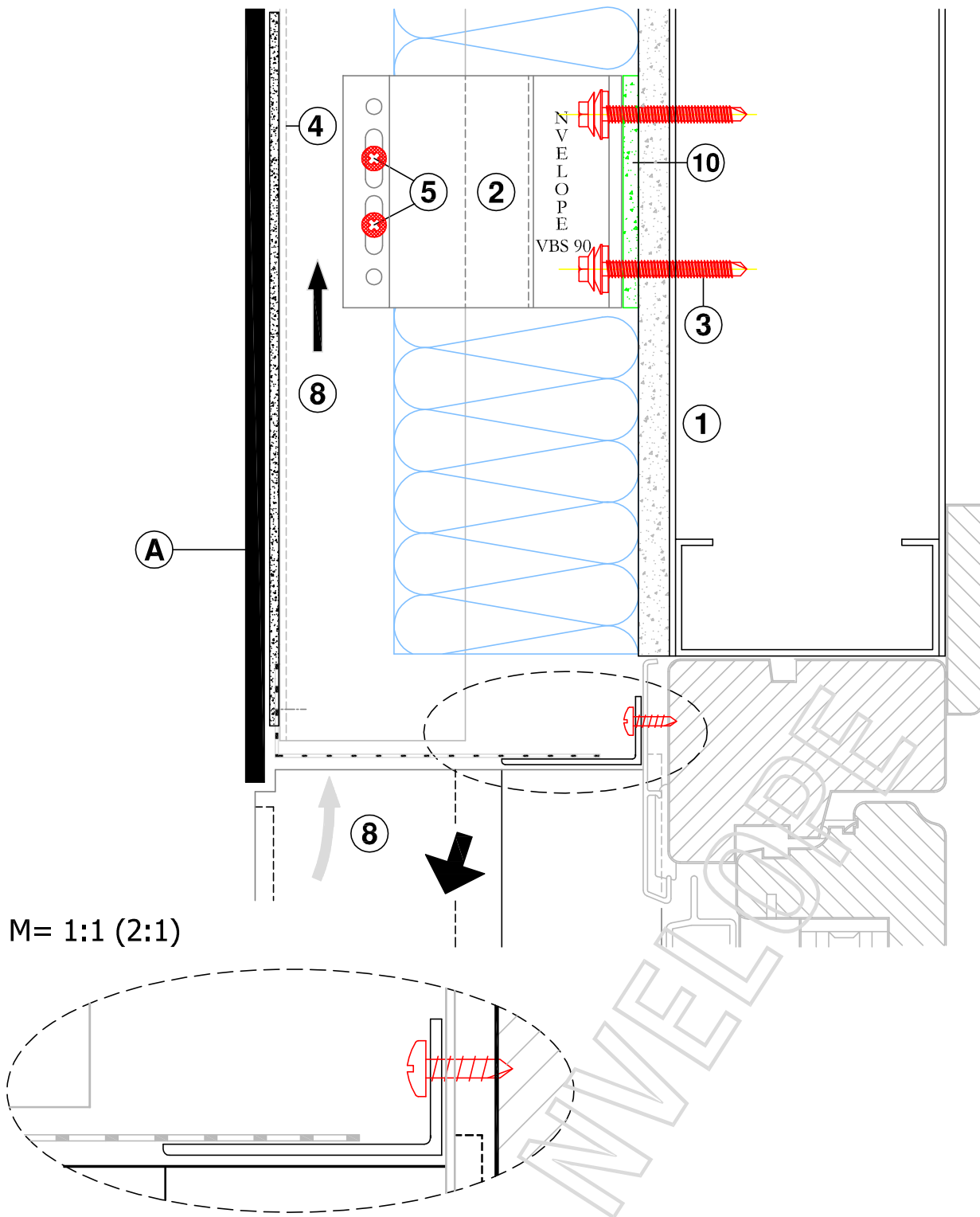
HORIZONTAL SECTION - WINDOW JAMB DETAIL



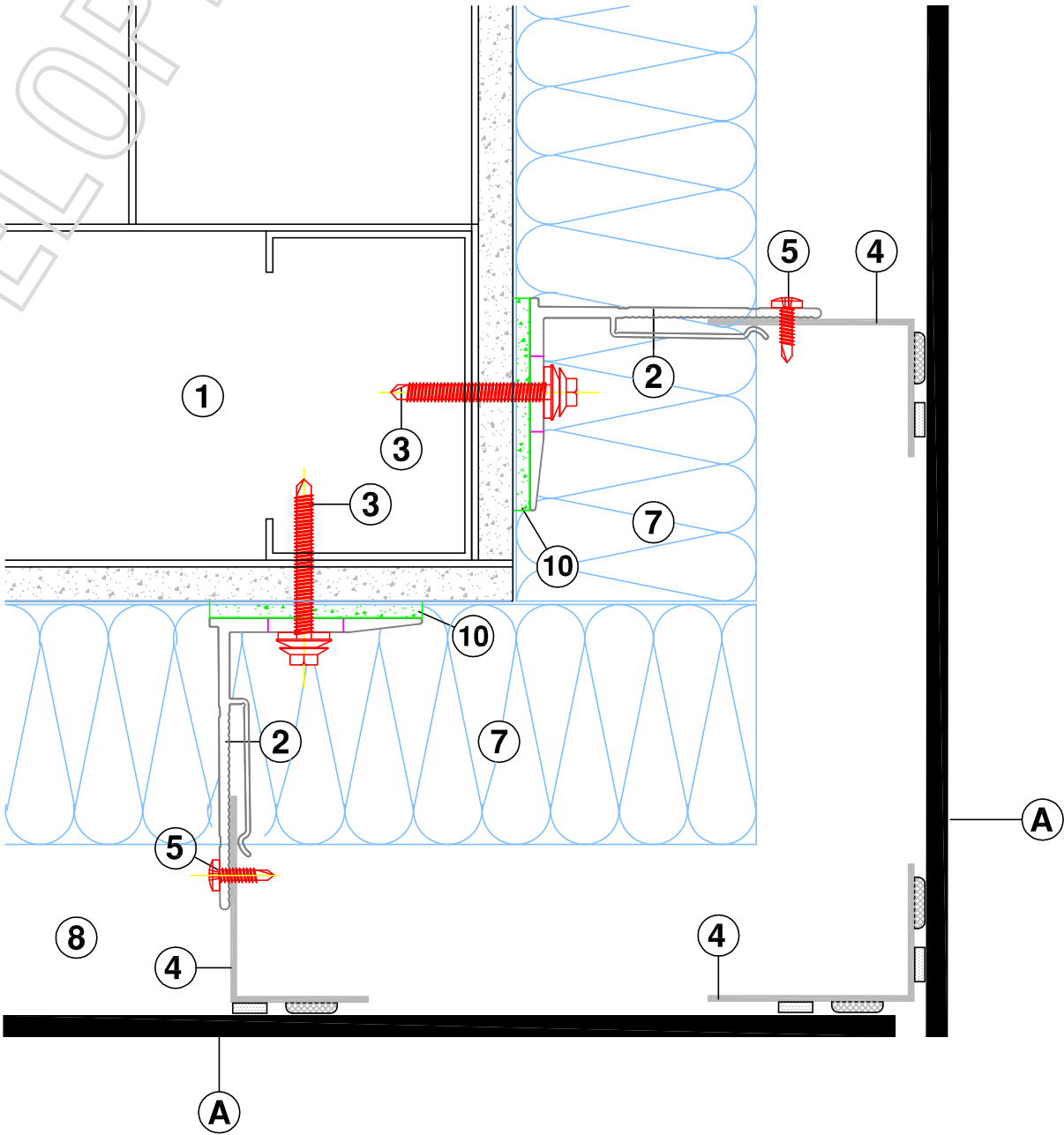
M= 1:1 (2:1)



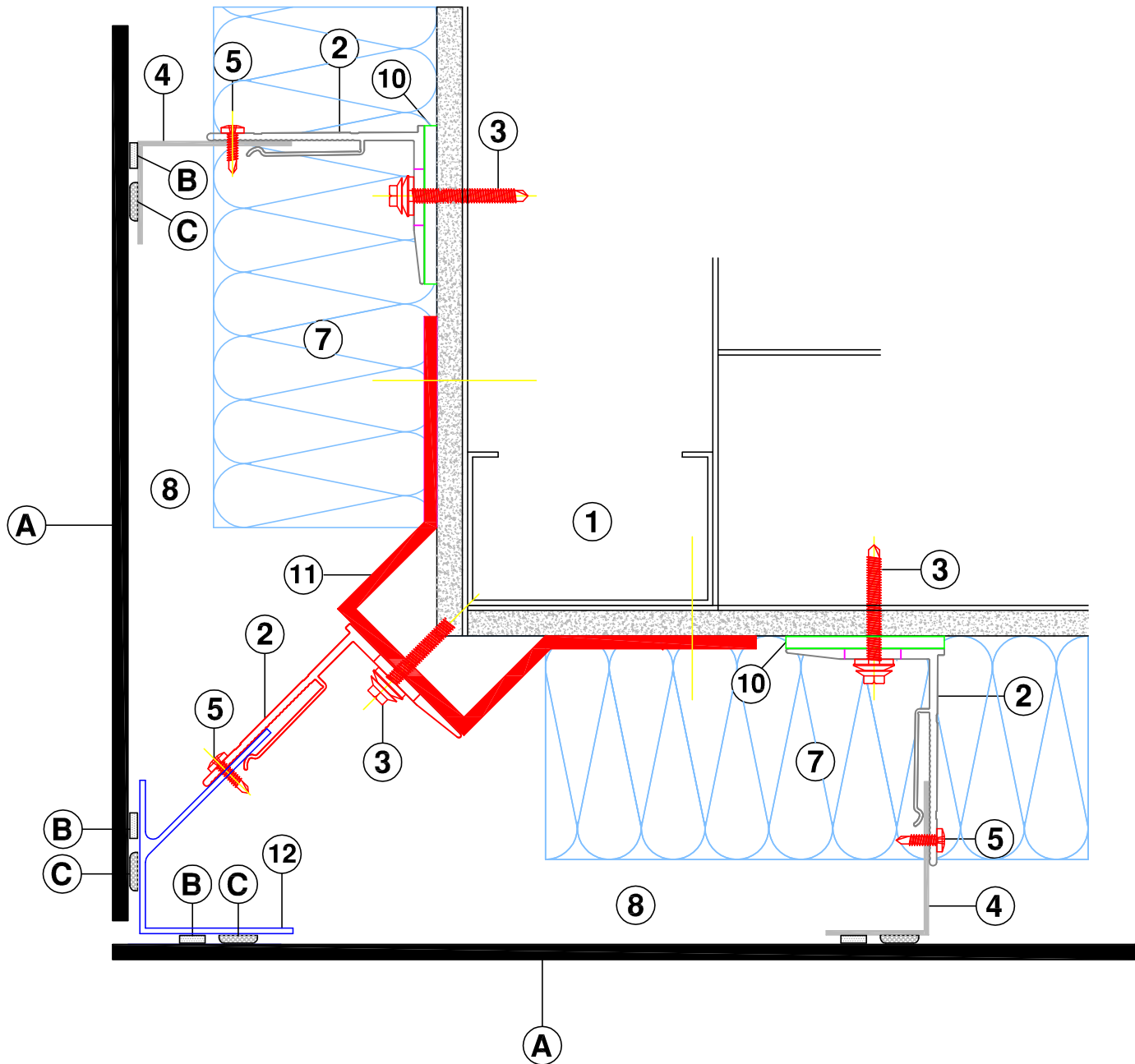
VERTICAL SECTION - WINDOW SILL DETAIL



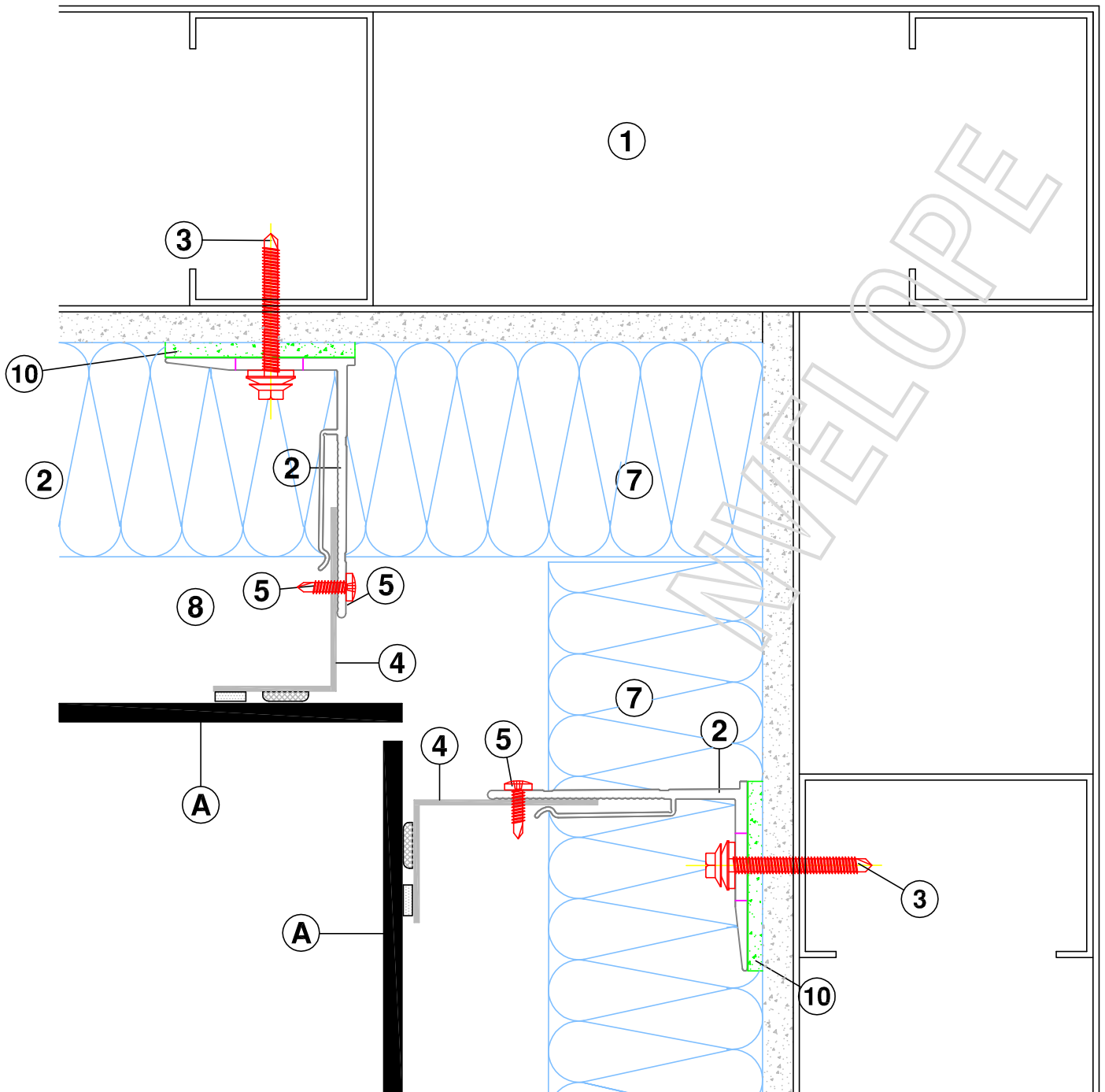
VERTICAL SECTION - WINDOW HEAD DETAIL



HORIZONTAL SECTION - EXTERNAL CORNER



HORIZONTAL SECTION - EXTERNAL CORNER - WITH CORNER BRACKET



HORIZONTAL SECTION - INTERNAL CORNER